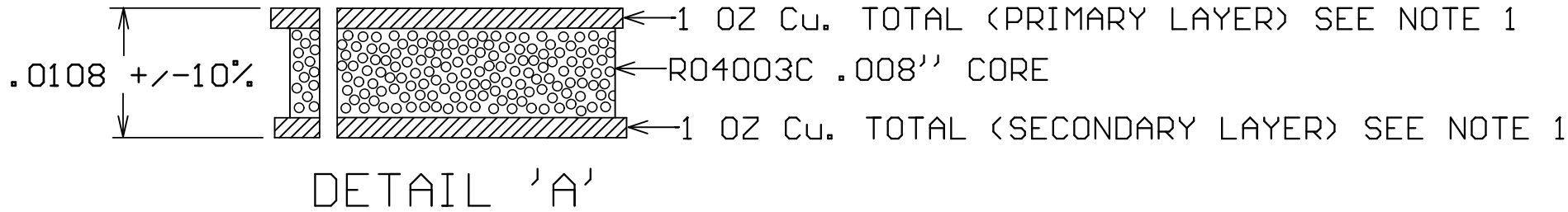
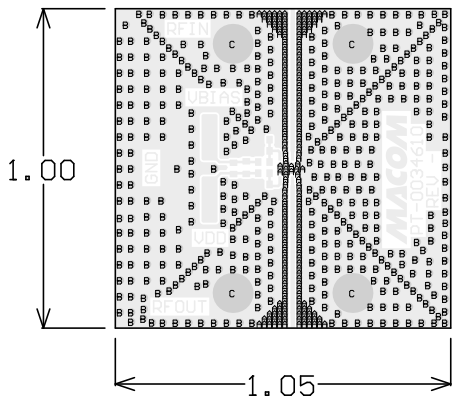


BOARD DIELECTRIC / COPPER STACKUP
FINAL BOARD THICKNESS



Symbol	Count	FHS	Tolerance	Plated	Hole Type
A	187	8.00mil	+3/-8mil	PTH	Round
B	431	13.00mil	+3/-13mil	PTH	Round
C	4	78.00mil	+/-3mil	PTH	Round
	622 Total				



- NOTES:
- MATERIAL:
DIELETRIC: R04003C, 8 MIL THICKNESS.
TOTAL COPPER THICKNESS ON PRIMARY AND SECONDARY SHALL BE 1 OZ.
MATERIAL STACKUP, AND THICKNESS, PER DETAIL 'A'.
 - FINISH: PRIMARY AND SECONDARY SIDE FINISH;
ELECTROLESS NICKEL/IMMERSION GOLD (ENIG) PER IPC-4552.
ELECTROLESS NICKEL: 118-236 MICRO-INCHES
IMMERSION GOLD: 2-8 MICRO-INCHES
THERE SHALL BE NO PITS, PIN HOLES, SCRATCHES OR NODULES WITHIN EXPOSED METAL AREAS
STACKUP REPRESENTS FINISHED THICKNESS.
 - PCB SHALL BE BUILT PER IPC-6012 CLASS 2 AND CONFORM TO IPC-A-600 CLASS 2 LATEST REVISIONS.
 - ALL HOLES TO BE PLATED THRU UNLESS OTHERWISE SPECIFIED.
 - LINE WIDTH AND SPACING SHALL BE +/- 1 MIL.
 - ELECTRONIC DATA IS EQUAL TO THE FINISHED LINE WIDTH.
 - ALL FINISHED HOLE SIZES APPLY AFTER PLATING.
 - COPPER PLATING IN THROUGH HOLES WILL BE .001'' MINIMUM AVERAGE WITH AN ABSOLUTE MINIMUM OF .0007''.
 - DIMENSIONS SHOWN ARE FOR LOCATION OF 0,0 FOR THE DRILL FILE.

10. ALL CPWG LINES ON LAYER 1 ARE CONTROLLED IMPEDANCE. A 14.0 MIL LINE WITH A 6.5 MIL SPACING SHALL BE 50 OHMS +/- 5% WITH REFERENCE TO THE GROUND PLANE WITH A DISTANCE OF 8 MIL FROM LAYER 2.

- NO SOLDERMASK ON PCB.
- GROUND FILL SHALL EXTEND TO BOARD EDGES UNLESS OTHERWISE NOTED.
EXPOSED COPPER ON BOARD EDGE SHALL BE ACCEPTABLE.
- ALL MATERIALS DESCRIBED IN THIS DOCUMENT/DRAWING SHALL BE IN COMPLIANCE WITH AND CONTAIN NO SUBSTANCES RESTRICTED OR REQUIRING SPECIAL RECLAMATION UNDER THE LATEST RoHS, WEEE OR ELV DIRECTIVES.

Primary Layer

UNLESS OTHERWISE SPECIFIED
INTERPRET DRAWING PER ASME Y14.5
DO NOT SCALE THIS DRAWING

NOTE: THIS DRW INCORPORATES
THIRD ANGLE PROJECTION

MACOM Technology Solutions
CONFIDENTIAL INFORMATION SUBJECT TO NDA

The information contained in this document or material is the valuable and confidential property of MACOM Technology Solutions Holdings, Inc. and/or its subsidiaries or affiliates (collectively MACOM), provided to you subject to a non-disclosure agreement between you and MACOM solely for use in supporting MACOM's business as and to the extent MACOM authorizes in writing from time to time. This information shall be held in strictest confidence and shall not be reproduced, published, disclosed to others, or used for any purpose except as and to the extent specifically permitted in writing by MACOM. If this legend must be included in any and all copies. This document or material shall be promptly returned to MACOM or destroyed upon request, completion of the use for which it was made available to recipient, or termination of MACOM's relationship with recipient, whichever first occurs.

UNLESS OTHERWISE SPECIFIED
DIMENSIONS ARE IN INCHES

TOLERANCES ON

DECIMALS	ANGLES
.X ±.1 .XX ±.02 .XXX ±.005 .XXXX ±.0005	±0.5

UNLESS OTHERWISE SPECIFIED
63 ALL OVER

MATERIAL
SEE NOTE 1

FINISH
SEE NOTE 2

WWW.MACOM.COM

TITLE
SAMPLE BOARD
MAAL-011198

SIZE	DRAWING NO.	REVISION
B	PT-0034610	—

SCALE: 1:1	PACKAGE TYPE: 2mmQFN50P-8LD	SHEET 1 OF 1
------------	-----------------------------	--------------